

# Martindale Hall Historic Museum

**Address:** 1 Manoora Rd, Mintaro SA 5415

**Phone:** (08) 88439088 or 0417 838 897

**Open:** 11 am to 4 pm Wednesdays to Mondays

*Closed Tuesday (excluding school holidays).*

**Closed:** Good Friday, Christmas Day, Boxing Day & New Year's Day.

Closed on **extreme** weather warning days. (phone for confirmation).

Other times by appointment only.

Martindale Hall is a Georgian styled with Italianate influenced sandstone mansion which has significant heritage value in South Australia. Built in 1879 – 1880 for Edmund Bowman Jr. at a cost of £30,000 it has some 32 rooms and boasts a large cellar of some 7 rooms.

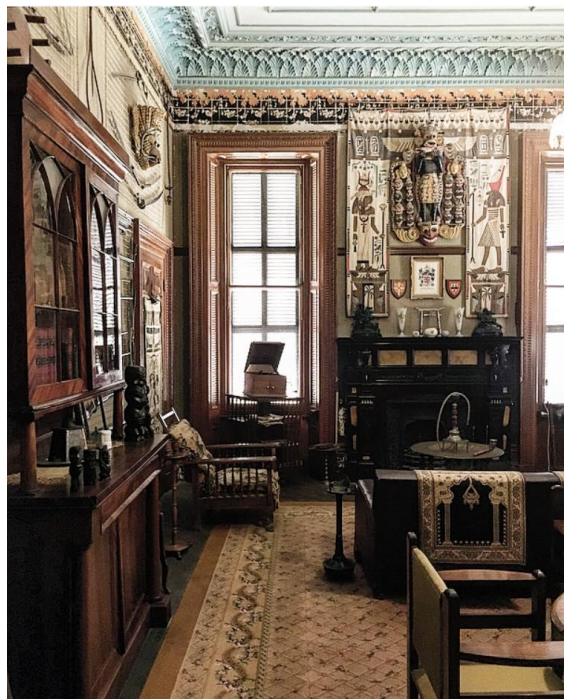
Edmund surrounded the home with a polo ground, a racecourse, a boating lake and a cricket pitch where the English 11 played at least once.



William Tennant Mortlock acquired the property in 1891 due to Edmund's finances suffering severely first during the 1885 onwards drought followed by a depression in Australia which led to a dramatic fall in wool prices.

To visit Martindale Hall today is a unique experience of a living museum, a step back in time to the days of gracious living on a large pastoral estate late in the 1800's to early 1900's. Where a rumored 14 servants 4 of which lived in the hall and on call 24 hrs. a day looked after the needs of two people, such was the extravagant upper class lifestyle of the wealthy pastoralist.

Your hosts Sharon & Michael Morris welcome you to wander the hall and enjoy its remarkable history and grandeur.



*Please note no backpacks, hand bags or photography allowed inside the hall.*

**Exclusive use of Martindale Hall for private functions**, including Weddings, Birthday celebrations, Cocktail parties and Conferences.

